

Welcoming sunlight from the street front, this design provides solar access as well as privacy.

Clerestory windows and a private courtyard bring sunlight deep into the living spaces. The private courtyard can be opened up to become an outdoor 'room' and a perfect entertainment area. Two living spaces are created at will whilst maintaining visual connection.

This design offers efficient spaces with great functionality and liveability. We present another of our 9 Star range -

# Salute to the Sun



## ENVIRONMENTAL FEATURES

### 1) 9 Star House Energy Efficiency

- House layout and clerestory windows combine to bring sunlight deep into all living spaces
- Eaves designed to let in the winter sun, and keep out the summer rays
- Double glazed low emissivity coated casement windows & bi-folds to maximise ventilation
- Thermal mass provided by polished/ tiled concrete floor and recycled & bagged reverse brick veneer walls to store the heat in winter and cool in summer
- Highly insulated, tight building fabric
- Solar hot water system with instantaneous gas boost
- Louver vents to all exhaust fans (eliminates unwanted air leaks)
- Reversible ceiling fans to provide summer cooling
- LED and compact fluorescent lighting throughout
- Greenswitch to turn off standby loads
- 2.0 kW grid interactive Photovoltaic system

### 2) Efficient use of water (~1/3 average mains water use)

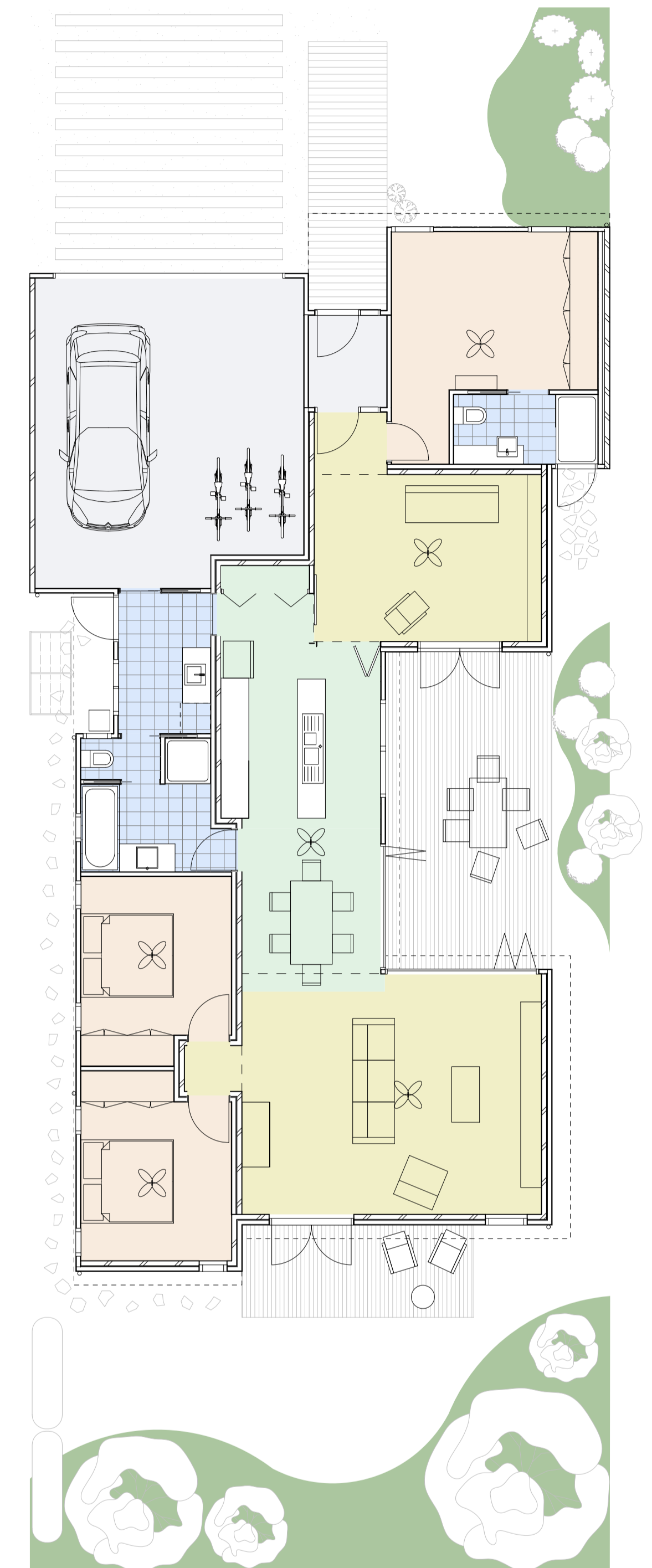
- Rainwater collected from entire roof via a charged filtered system
- Rounded gutters to enhance self cleaning
- 5000 litre Rainwater tank to run laundry, flush toilets, & water garden. Mains backup
- Redwater valves to direct 'cold' hot water, normally wasted, to the watertank
- Water efficient tapware throughout; 7.5 litre per minute shower roses; & 3/4.5 litre flush toilets
- Greywater plumbing kept separate from sewer for future pickup
- Nylex greywater gravity diversion system to underground garden distribution (optional)

### 3) Low Impact Material Selection

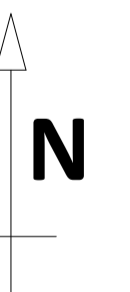
- Low Embodied Energy Concrete floor made from Ecoblend concrete (60% cement replacement) with recycled aggregate and recycled steel
- Plantation hoop pine timber windows, with recycled Karri door frames
- FSC certified, Plantation or Salvaged timber used throughout
- Recycled P.E.T polyester insulation.
- Ekodeck decking and ramps
- Recycled brick to reverse brick veneer internal walls
- Low Embodied energy cladding materials- Rough sawn battens, Easy lap panel and Zinalume

### 4) Health Benefits

- Zero VOC (Volatile Organic Compounds) paint throughout
- E0 (minimal formaldehyde off-gassing) cabinetry and trims throughout.
- Bamboo flooring in bedrooms
- Easy to clean surfaces in living spaces throughout
- Warm & bright with excellent ventilation when required



| Areas                            |                   |
|----------------------------------|-------------------|
| Floor Area                       | 165m <sup>2</sup> |
| Garage Area                      | 40m <sup>2</sup>  |
| Deck                             | 35m <sup>2</sup>  |
| Block min. dimension 12.5m x 30m |                   |



**Positive  
Footprints  
9 star Series**

[info@positivefootprints.com.au](mailto:info@positivefootprints.com.au)

