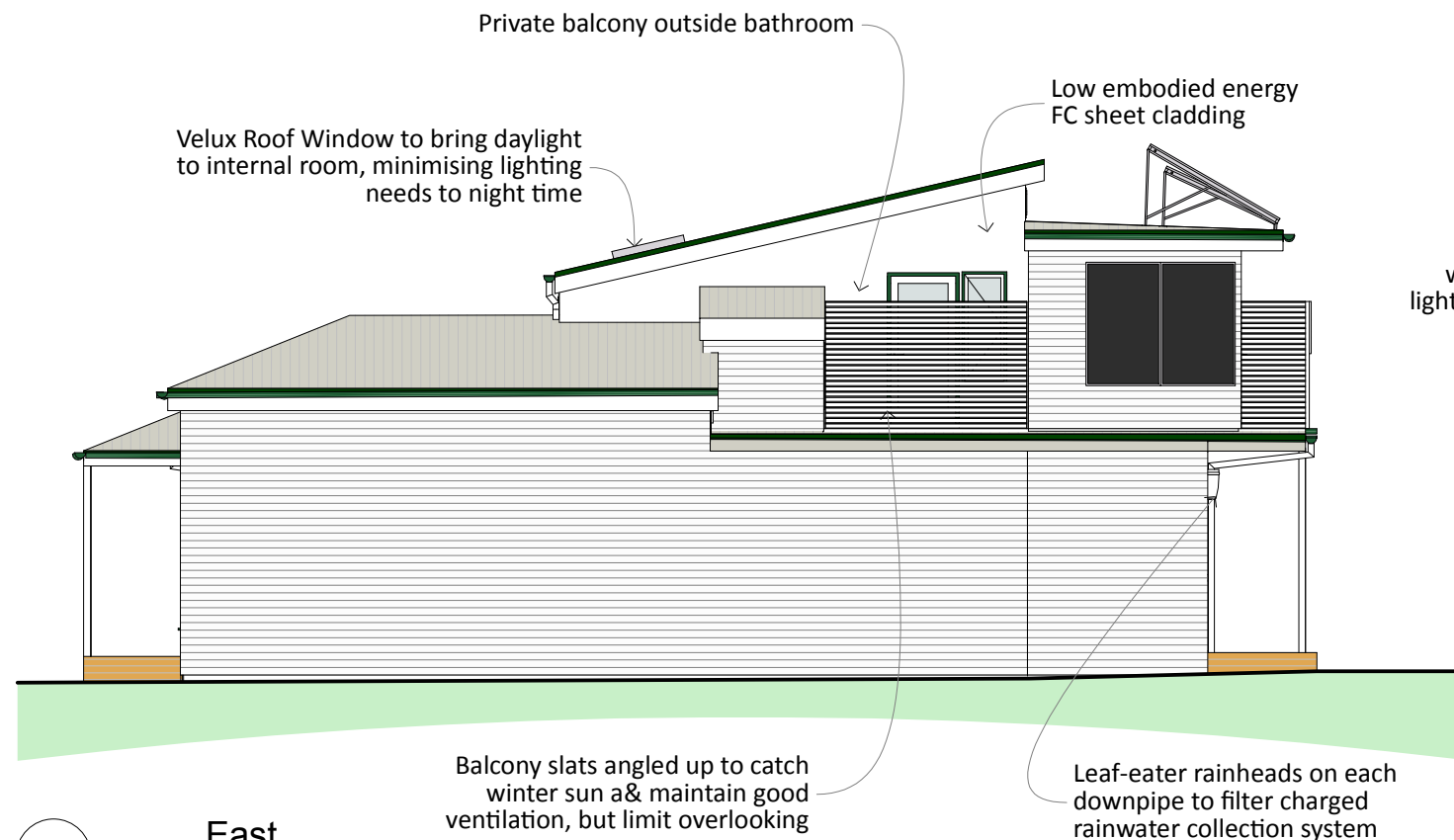


Double-glazed Low-E Argon filled timber windows throughout, hinged to optimise airflow into & from the internal spaces

New Linea Weatherboard used to match existing streetscape

1 South



Private balcony outside bathroom

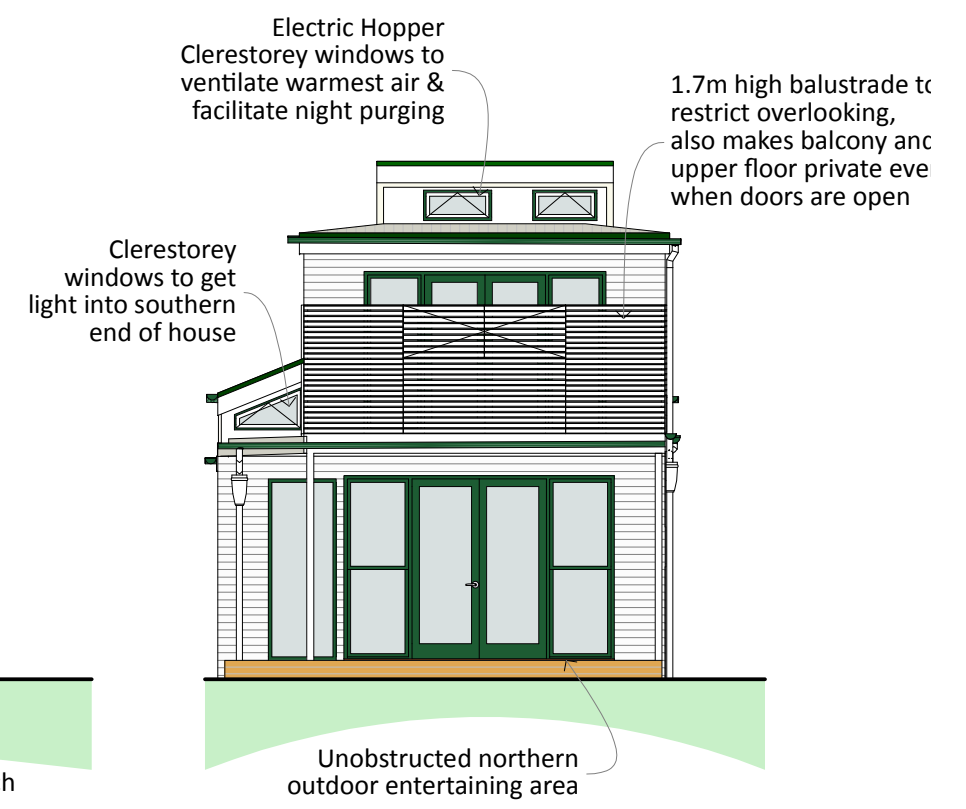
Velux Roof Window to bring daylight to internal room, minimising lighting needs to night time

Low embodied energy FC sheet cladding

Balcony slats angled up to catch winter sun a& maintain good ventilation, but limit overlooking

Leaf-eater rainheads on each downpipe to filter charged rainwater collection system

2 East



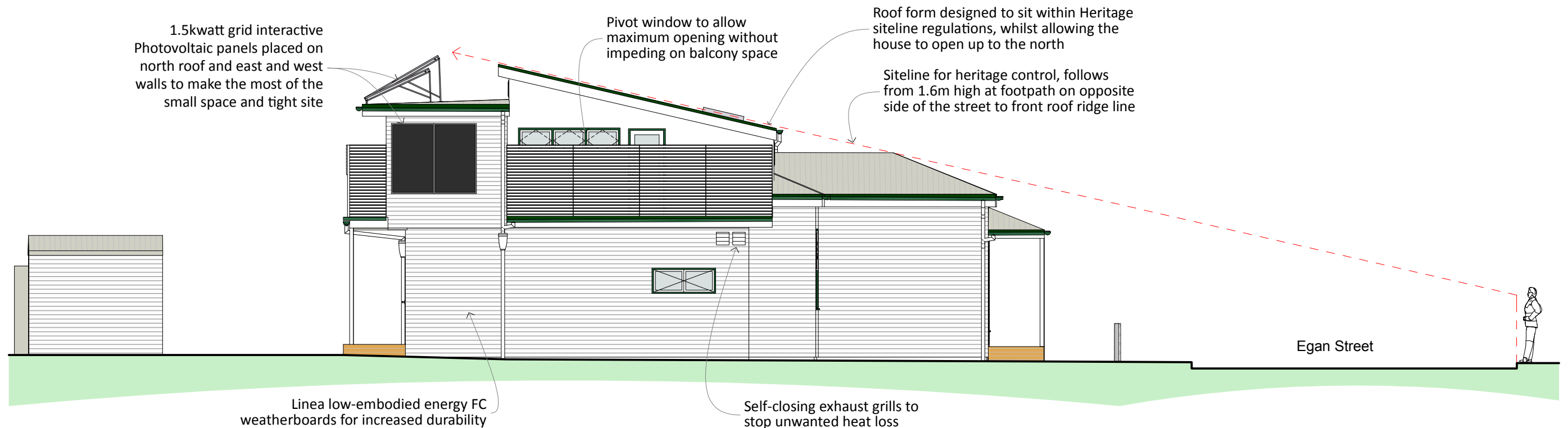
Electric Hopper Clerestory windows to ventilate warmest air & facilitate night purging

1.7m high balustrade to restrict overlooking, also makes balcony and upper floor private even when doors are open

Clerestory windows to get light into southern end of house

Unobstructed northern outdoor entertaining area

3 North



1.5kwatt grid interactive Photovoltaic panels placed on north roof and east and west walls to make the most of the small space and tight site

Pivot window to allow maximum opening without impeding on balcony space

Roof form designed to sit within Heritage siteline regulations, whilst allowing the house to open up to the north

Siteline for heritage control, follows from 1.6m high at footpath on opposite side of the street to front roof ridge line

Linea low-embodied energy FC weatherboards for increased durability

Self-closing exhaust grills to stop unwanted heat loss

Egan Street

4 West

